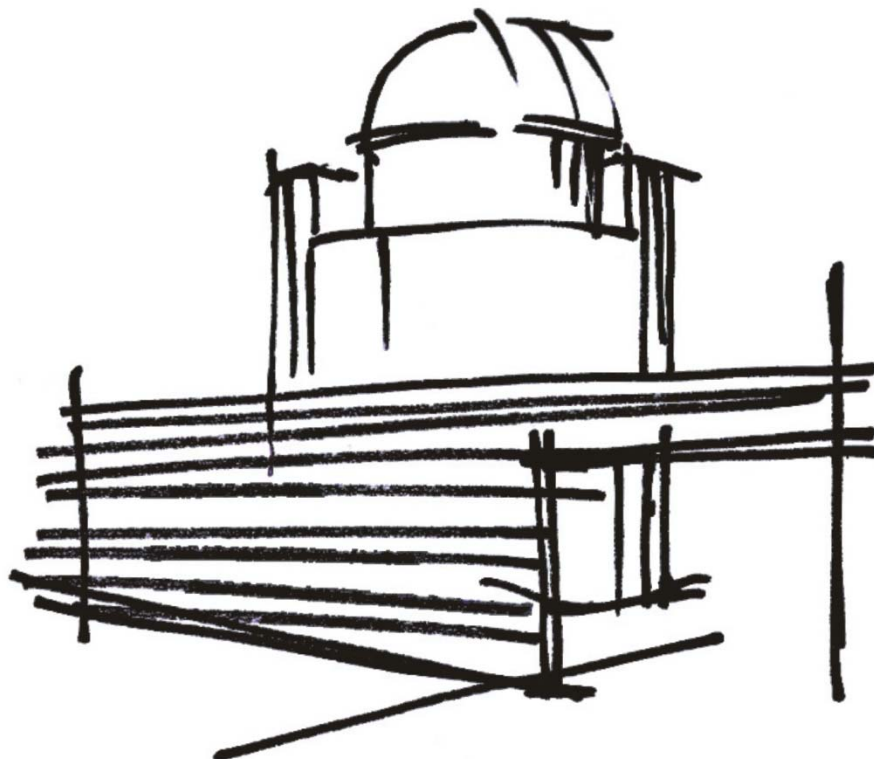


Observatório Longa Vista



Catálogo Deep Sky

julho 2011

Cls	Primary ID	Alternate ID	Con	RA 2000	Dec 2000	Mag	Size	Distance
Gal	NGC 55	MCG -7-1-13	Scl	00h15m08.4s	-39°13'13"	8.5	30.2'x 3.4'	4.9 Mly
Glob	47 Tucanae	NGC 104	Tuc	00h24m05.0s	-72°04'54"	4.0	50.0'	20000 ly
Gal	M 110	NGC 205	And	00h40m22.3s	+41°41'09"	8.9	17.8'x 9.8'	2.6 Mly
Gal	M 32	NGC 221	And	00h42m41.8s	+40°51'58"	8.9	8.5'x 5.9'	2.6 Mly
Gal	Andromeda Galaxy	M 31	And	00h42m44.3s	+41°16'07"	4.3	2.6°x 1.1°	2.6 Mly
Gal	Sculptor Galaxy	NGC 253	Scl	00h47m33.1s	-25°17'20"	7.9	28.2'x 5.5'	13.0 Mly
Gal	Small Magellanic Cl	NGC 292	Tuc	00h52m38.0s	-72°48'01"	2.8	5.3°x 3.4°	200000 ly
Glob	NGC 362		Tuc	01h03m14.0s	-70°50'54"	6.8	14.0'	39000 ly
Gal	Pinwheel Galaxy	M 33	Tri	01h33m50.9s	+30°39'36"	6.4	61.7'x 36.3'	2.9 Mly
Gal	M 74	NGC 628	Psc	01h36m41.8s	+15°47'00"	9.7	9.5'x 8.9'	
Open	NGC 752	Collinder 23	And	01h57m41.0s	+37°47'06"	6.6	75.0'	1500 ly
Gal	M 77	NGC 1068	Cet	02h42m40.8s	-00°00'48"	9.7	6.6'x 5.8'	70.0 Mly
Gal	NGC 1097	Arp 77	For	02h46m19.1s	-30°16'30"	10.2	9.3'x 5.6'	
Gal	NGC 1291	MCG -7-7-8	Eri	03h17m18.6s	-41°06'29"	9.5	9.1'x 6.6'	
Gal	Fornax A radio sour	NGC 1316	For	03h22m41.5s	-37°12'27"	9.4	12.6'x 7.9'	
Open	Collinder 39	Melotte 20	Per	03h24m19.0s	+49°51'42"	2.3	5.0°	600 ly
PNe	NGC 1360	M 1-3	For	03h33m14.6s	-25°52'18"	9.4	6.0'	1300 ly
Open	Pleiades	M 45	Tau	03h47m00.0s	+24°07'00"	1.5	120.0'	490 ly
Neb	California Nebula	NGC 1499	Per	04h03m12.0s	+36°22'00"	5.0	120.0'x 41.0'	
PNe	Cleopatra's Eye	NGC 1535	Eri	04h14m15.8s	-12°44'22"	9.4	20"	5800 ly
Open	Hyades	Collinder 50	Tau	04h26m54.0s	+15°52'00"	0.8	5.5°	150 ly
Gal	Large Magellanic Cl	ESO 56 115	Dor	05h23m34.6s	-69°45'22"	0.8	10.8°x 9.2°	200000 ly
Glob	M 79	NGC 1904	Lep	05h24m11.0s	-24°31'30"	7.7	9.6'	49000 ly
Open	M 38	NGC 1912	Aur	05h28m40.0s	+35°50'54"	6.8	20.0'	3500 ly
Neb	Crab Nebula	M 1	Tau	05h34m30.0s	+22°01'00"	8.4	8.0'	
Open	NGC 1981	OCL 525	Ori	05h35m09.0s	-04°25'54"	4.2	28.0'	1300 ly
Neb	Great Orion Nebula	M 42	Ori	05h35m18.0s	-05°23'00"	4.0	40.0'x 20.0'	
Open	NGC 1980	Collinder 72	Ori	05h35m24.0s	-05°54'54"	2.5	20.0'	1600 ly
Neb	M 43	NGC 1982	Ori	05h35m30.0s	-05°16'00"	9.0	7.0'x 6.0'	
Open	M 36	NGC 1960	Aur	05h36m18.0s	+34°08'24"	6.5	10.0'	4300 ly
Neb	Tarantula Nebula	NGC 2070	Dor	05h38m36.0s	-69°06'00"	8.3	5.0'	
Neb	IC 434	LBN 954	Ori	05h41m00.0s	-02°27'00"	11.0	50.0'x 8.0'	
Neb	Flame Nebula	NGC 2024	Ori	05h41m42.0s	-01°51'00"		20.0'	
Open	M 37	NGC 2099	Aur	05h52m18.0s	+32°33'12"	6.2	14.0'	4500 ly
Open	M 35	NGC 2168	Gem	06h09m00.0s	+24°21'00"	5.6	25.0'	3000 ly
Open	NGC 2244	Collinder 99	Mon	06h31m55.0s	+04°56'30"	5.2	29.0'	4700 ly
Neb	Rosette	NGC 2237	Mon	06h32m02.0s	+04°59'10"	5.5	70.0'x 60.0'	
Open	M 41	NGC 2287	CMa	06h46m01.0s	-20°45'24"	5.0	39.0'	2300 ly
Open	NGC 2354	Collinder 131	CMa	07h14m10.0s	-25°41'24"	8.9	18.0'	13000 ly
Open	NGC 2362	Collinder 136	CMa	07h18m41.0s	-24°57'18"	3.8	5.0'	4500 ly
PNe	Eskimo Nebula	NGC 2392	Gem	07h29m10.8s	+20°54'42"	8.6	47"	3400 ly
Open	M 47	NGC 2422	Pup	07h36m35.0s	-14°29'00"	4.3	25.0'	1600 ly
Open	M 46	NGC 2437	Pup	07h41m46.0s	-14°48'36"	6.6	20.0'	4500 ly
PNe	NGC 2438	PN G231.8+04.1	Pup	07h41m51.4s	-14°43'55"	11.0	1.1'	3700 ly
PNe	NGC 2440	PN G234.8+02.4	Pup	07h41m55.4s	-18°12'31"	11.5	54"	3700 ly

Cls	Primary ID	Alternate ID	Con	RA 2000	Dec 2000	Mag	Size	Distance
Open	M 93	NGC 2447	Pup	07h44m30.0s	-23°51'24"	6.5	10.0'	3400 ly
Open	NGC 2451	Collinder 161	Pup	07h45m23.0s	-37°57'21"	3.7	45.0'	720 ly
Open	NGC 2477	Collinder 165	Pup	07h52m10.0s	-38°31'48"	5.7	15.0'	4000 ly
Open	NGC 2516	Collinder 172	Car	07h58m04.0s	-60°45'12"	3.3	30.0'	1300 ly
Open	NGC 2547	Collinder 177	Vel	08h10m09.0s	-49°12'54"	5.0	25.0'	1500 ly
Open	NGC 2546	Collinder 178	Pup	08h12m15.0s	-37°35'42"	5.2	70.0'	3000 ly
Open	M 48	NGC 2548	Hya	08h13m43.0s	-05°45'00"	5.5	30.0'	2500 ly
Open	Beehive	M 44	Cnc	08h40m24.0s	+19°40'00"	3.9	70.0'	610 ly
Open	IC 2391	Collinder 191	Vel	08h40m32.0s	-53°02'00"	2.6	60.0'	570 ly
Open	M 67	NGC 2682	Cnc	08h51m18.0s	+11°48'00"	7.4	25.0'	3000 ly
Glob	NGC 2808		Car	09h12m03.0s	-64°51'48"	6.2	14.0'	26000 ly
PNe	NGC 2867	He 2-27	Car	09h21m25.3s	-58°18'41"	9.7	12"	6100 ly
Open	NGC 3114	Collinder 215	Car	10h02m36.0s	-60°07'12"	4.5	35.0'	3000 ly
PNe	Eight Burst	NGC 3132	Vel	10h07m01.8s	-40°26'11"	8.2	1.4'	3600 ly
PNe	Ghost of Jupiter	NGC 3242	Hya	10h24m46.1s	-18°38'32"	8.6	40"	2800 ly
Open	NGC 3293	Collinder 224	Car	10h35m51.0s	-58°13'48"	6.2	6.0'	7600 ly
Open	IC 2602	Collinder 229	Car	10h42m58.0s	-64°24'00"	1.6	100.0'	520 ly
Gal	M 95	NGC 3351	Leo	10h43m57.7s	+11°42'13"	10.6	7.1'x 4.3'	45.0 Mly
Neb	Eta Carinae Nebula	NGC 3372	Car	10h45m06.0s	-59°52'00"	3.0	120.0'	
Gal	M 96	NGC 3368	Leo	10h46m45.7s	+11°49'12"	10.1	7.6'x 5.0'	45.0 Mly
Open	NGC 3532	Collinder 238	Car	11h05m39.0s	-58°45'12"	3.4	50.0'	1600 ly
Gal	M 65	NGC 3623	Leo	11h18m55.7s	+13°05'32"	10.1	8.1'x 2.1'	41.0 Mly
Gal	M 66	NGC 3627	Leo	11h20m14.9s	+12°59'30"	9.7	8.9'x 4.0'	41.0 Mly
Open	NGC 3766	Collinder 248	Cen	11h36m14.0s	-61°36'30"	4.6	9.3'	7200 ly
PNe	Blue Planetary	NGC 3918	Cen	11h50m17.7s	-57°10'57"	8.4	12"	4600 ly
Gal	St. Katherine's Whe	M 99	Com	12h18m49.6s	+14°24'59"	10.4	5.1'x 4.6'	70.0 Mly
Gal	M 106	NGC 4258	CVn	12h18m57.6s	+47°18'13"	9.1	16.6'x 6.3'	30.0 Mly
Gal	M 61	NGC 4303	Vir	12h21m55.0s	+04°28'29"	10.2	6.3'x 5.8'	70.0 Mly
Gal	M 100	NGC 4321	Com	12h22m54.9s	+15°49'21"	10.0	7.6'x 6.8'	70.0 Mly
Gal	M 84	NGC 4374	Vir	12h25m03.9s	+12°53'12"	10.1	6.3'x 5.5'	70.0 Mly
Open	Collinder 256	Melotte 111	Com	12h25m06.0s	+26°06'00"	2.9	120.0'	310 ly
Gal	M 85	NGC 4382	Com	12h25m24.1s	+18°11'28"	10.0	7.6'x 5.9'	70.0 Mly
Gal	M 86	NGC 4406	Vir	12h26m12.2s	+12°56'44"	9.8	10.0'x 7.4'	70.0 Mly
Gal	M 49	NGC 4472	Vir	12h29m46.8s	+08°00'01"	9.3	9.3'x 7.6'	70.0 Mly
Gal	M 87	NGC 4486	Vir	12h30m49.2s	+12°23'29"	9.6	7.9'x 7.4'	70.0 Mly
Dark	Coalsack	DC 300.7-001.0	Cru	12h31m19.0s	-63°44'36"	6.0	16.0'	
Gal	M 88	NGC 4501	Com	12h31m59.2s	+14°25'13"	10.2	7.8'x 4.8'	70.0 Mly
Gal	NGC 4565	MCG 4-30-6	Com	12h36m20.8s	+25°59'15"	10.1	14.5'x 2.3'	
Gal	M 90	NGC 4569	Vir	12h36m50.0s	+13°09'45"	10.1	9.5'x 4.5'	70.0 Mly
Gal	M 58	NGC 4579	Vir	12h37m43.9s	+11°49'06"	10.5	5.6'x 4.4'	70.0 Mly
Gal	Sombrero Galaxy	M 104	Vir	12h39m59.3s	-11°37'22"	9.1	9.1'x 5.6'	60.0 Mly
Gal	M 59	NGC 4621	Vir	12h42m02.3s	+11°38'52"	10.7	4.8'x 3.3'	70.0 Mly
Gal	M 60	NGC 4649	Vir	12h43m40.1s	+11°33'10"	9.8	7.4'x 6.3'	70.0 Mly
Gal	M 94	NGC 4736	CVn	12h50m53.1s	+41°07'12"	8.7	10.0'x 8.7'	17.0 Mly
Open	Jewel Box	NGC 4755	Cru	12h53m39.0s	-60°21'42"	5.2	10.0'	6400 ly
Gal	Black Eye Galaxy	M 64	Com	12h56m43.8s	+21°41'00"	9.3	10.0'x 5.0'	12.0 Mly
Gal	NGC 4945	ESO 219 24	Cen	13h05m26.2s	-49°28'15"	9.3	20.4'x 4.3'	15.0 Mly
Gal	Sunflower Galaxy	M 63	CVn	13h15m49.3s	+42°01'45"	9.3	12.0'x 7.2'	43.0 Mly
Gal	Centaurus A	NGC 5128	Cen	13h25m27.7s	-43°01'07"	7.8	27.5'x 18.2'	12.0 Mly
Glob	Omega Centauri	NGC 5139	Cen	13h26m46.0s	-47°28'36"	3.9	55.0'	16000 ly
Gal	Whirlpool Galaxy	M 51	CVn	13h29m52.3s	+47°11'40"	8.7	9.8'x 7.8'	43.0 Mly
Gal	M 83	NGC 5236	Hya	13h37m00.8s	-29°51'56"	7.8	14.1'x 13.2'	15.0 Mly
Glob	M 3	NGC 5272	CVn	13h42m11.0s	+28°22'42"	6.3	18.0'	42000 ly

Cls	Primary ID	Alternate ID	Con	RA 2000	Dec 2000	Mag	Size	Distance
Glob	M 5	NGC 5904	Ser	15h18m34.0s	+02°05'00"	5.7	23.0'	29000 ly
Glob	M 4	NGC 6121	Sco	16h23m36.0s	-26°31'30"	5.4	36.0'	9800 ly
Glob	Keystone Cluster	M 13	Her	16h41m41.0s	+36°27'36"	5.8	20.0'	26000 ly
Glob	M 12	NGC 6218	Oph	16h47m14.0s	-01°56'48"	6.1	16.0'	23000 ly
Open	NGC 6231	Collinder 315	Sco	16h54m10.0s	-41°49'30"	3.4	14.0'	4100 ly
Open	Collinder 318	Harvard 12	Sco	16h57m00.0s	-40°40'00"	8.6	60.0'	3700 ly
Glob	M 10	NGC 6254	Oph	16h57m09.0s	-04°06'00"	6.6	20.0'	23000 ly
Glob	M 62	NGC 6266	Oph	17h01m13.0s	-30°06'48"	6.4	15.0'	26000 ly
Glob	M 19	NGC 6273	Oph	17h02m38.0s	-26°16'06"	6.8	17.0'	23000 ly
PNe	Bug Nebula	NGC 6302	Sco	17h13m44.2s	-37°06'16"	12.8	1.2'	1800 ly
Glob	NGC 6362		Ara	17h31m55.0s	-67°02'54"	8.1	15.0'	23000 ly
Glob	NGC 6388		Sco	17h36m17.0s	-44°44'06"	6.8	10.4'	42000 ly
Open	Butterfly Cluster	M 6	Sco	17h40m20.0s	-32°15'12"	4.6	20.0'	1600 ly
Glob	NGC 6397		Ara	17h40m42.0s	-53°40'24"	5.3	31.0'	6500 ly
Open	IC 4665	Collinder 349	Oph	17h46m18.0s	+05°43'00"	5.3	70.0'	1100 ly
Open	M 7	NGC 6475	Sco	17h53m51.0s	-34°47'36"	3.3	80.0'	980 ly
Open	M 23	NGC 6494	Sgr	17h57m04.0s	-18°59'06"	5.9	29.0'	2000 ly
Neb	Trifid Nebula	M 20	Sgr	18h02m22.0s	-22°59'12"	6.3	16.0'x 9.0'	
Neb	Lagoon Nebula	M 8	Sgr	18h04m02.0s	-24°23'14"	5.0	17.0'x 15.0'	
Open	M 21	NGC 6531	Sgr	18h04m13.0s	-22°29'24"	7.2	14.0'	3900 ly
Glob	NGC 6541		CrA	18h08m02.0s	-43°42'54"	6.3	15.0'	13000 ly
Open	M 24	NGC 6603	Sgr	18h18m26.0s	-18°24'24"	11.1	6.0'	12000 ly
Neb	Eagle Nebula	M 16	Ser	18h18m48.4s	-13°49'10"	6.0	9.0'x 4.0'	
Open	M 18	NGC 6613	Sgr	18h19m58.0s	-17°06'06"	7.5	5.0'	4200 ly
Neb	Omega Nebula	M 17	Sgr	18h20m48.0s	-16°11'00"	6.0	11.0'	
Glob	M 28	NGC 6626	Sgr	18h24m33.0s	-24°52'12"	6.9	13.8'	16000 ly
Open	M 25	IC 4725	Sgr	18h31m47.0s	-19°07'00"	6.2	29.0'	2000 ly
Glob	M 22	NGC 6656	Sgr	18h36m24.0s	-23°54'12"	5.2	32.0'	9800 ly
Open	Wild Duck Cluster	M 11	Sct	18h51m05.0s	-06°16'12"	6.1	32.0'	6100 ly
PNe	Ring Nebula	M 57	Lyr	18h53m35.1s	+33°01'45"	9.4	1.4'	2600 ly
Gal	NGC 6744	ESO 104 42	Pav	19h09m45.9s	-63°51'28"	9.1	17.0'x 10.7'	
Glob	Pavo Globular	NGC 6752	Pav	19h10m52.0s	-59°58'54"	5.3	29.0'	20000 ly
Open	Collinder 399	OCL 113	Vul	19h25m24.0s	+20°11'00"	4.8	89.0'	4200 ly
Glob	M 55	NGC 6809	Sgr	19h40m00.0s	-30°57'42"	6.3	19.0'	20000 ly
PNe	Little Gem	NGC 6818	Sgr	19h43m57.8s	-14°09'12"	10.0	22"	7300 ly
PNe	Dumbbell	M 27	Vul	19h59m36.3s	+22°43'16"	7.3	8.0'	1100 ly
Neb	Veil Nebula (West)	NGC 6960	Cyg	20h45m42.0s	+30°43'00"	7.0	63.0'x 6.0'	
Neb	North American Nebula	NGC 7000	Cyg	20h58m30.0s	+44°22'28"	4.0	120.0'	
PNe	Saturn Nebula	NGC 7009	Aqr	21h04m10.9s	-11°21'48"	8.3	28"	3200 ly
Glob	M 15	NGC 7078	Peg	21h29m58.0s	+12°10'00"	6.3	18.0'	42000 ly
Glob	M 2	NGC 7089	Aqr	21h33m27.0s	-00°49'24"	6.6	16.0'	49000 ly
PNe	Helix	NGC 7293	Aqr	22h29m38.5s	-20°50'14"	6.3	16.0'	530 ly

Classes dos objetos

Open	aglomerado aberto
Glob	aglomerado globular
PNe	nebulosa planetaria
Neb	nebulosa
Gal	galaxia
Dark	nebulosa escura

Fontes utilizadas

- [1] Ellyard, D , Tirion, W, *The Southern Sky Guide*, Cambridge University Press, (2008)
- [2] Ferraiuolo, R., De Bernardini, E., *Exotico Cielo Profundo*, vol 1, Sur Astronomico, Buenos Aires (2010)
- [3] Napoleão, Tasso Augusto, *Um Catalogo de Objetos Difusos para o Hemisferio Sul*
- [4] www.surastronomico.com/exotico_cielo_profundo_objetos.htm
- [5] www.skyhound.com/skytools.html